

**Paper Reference(s) 4PH1/2P**  
**Pearson Edexcel International GCSE (9–1)**

**Physics**  
**Paper: 2P**

**Time: 1 hour 15 minutes plus your additional time allowance**

**Diagram Booklet**

**In the boxes below, write your name, centre number and candidate number.**

|                         |  |  |  |  |  |
|-------------------------|--|--|--|--|--|
| <b>Surname</b>          |  |  |  |  |  |
| <b>Other names</b>      |  |  |  |  |  |
| <b>Centre Number</b>    |  |  |  |  |  |
| <b>Candidate Number</b> |  |  |  |  |  |

**INSTRUCTIONS**

There may be spare copies of some diagrams in case you need them.

**THIS DIAGRAM BOOKLET MUST BE RETURNED WITH THE QUESTION PAPER AT THE END OF THE EXAMINATION.**

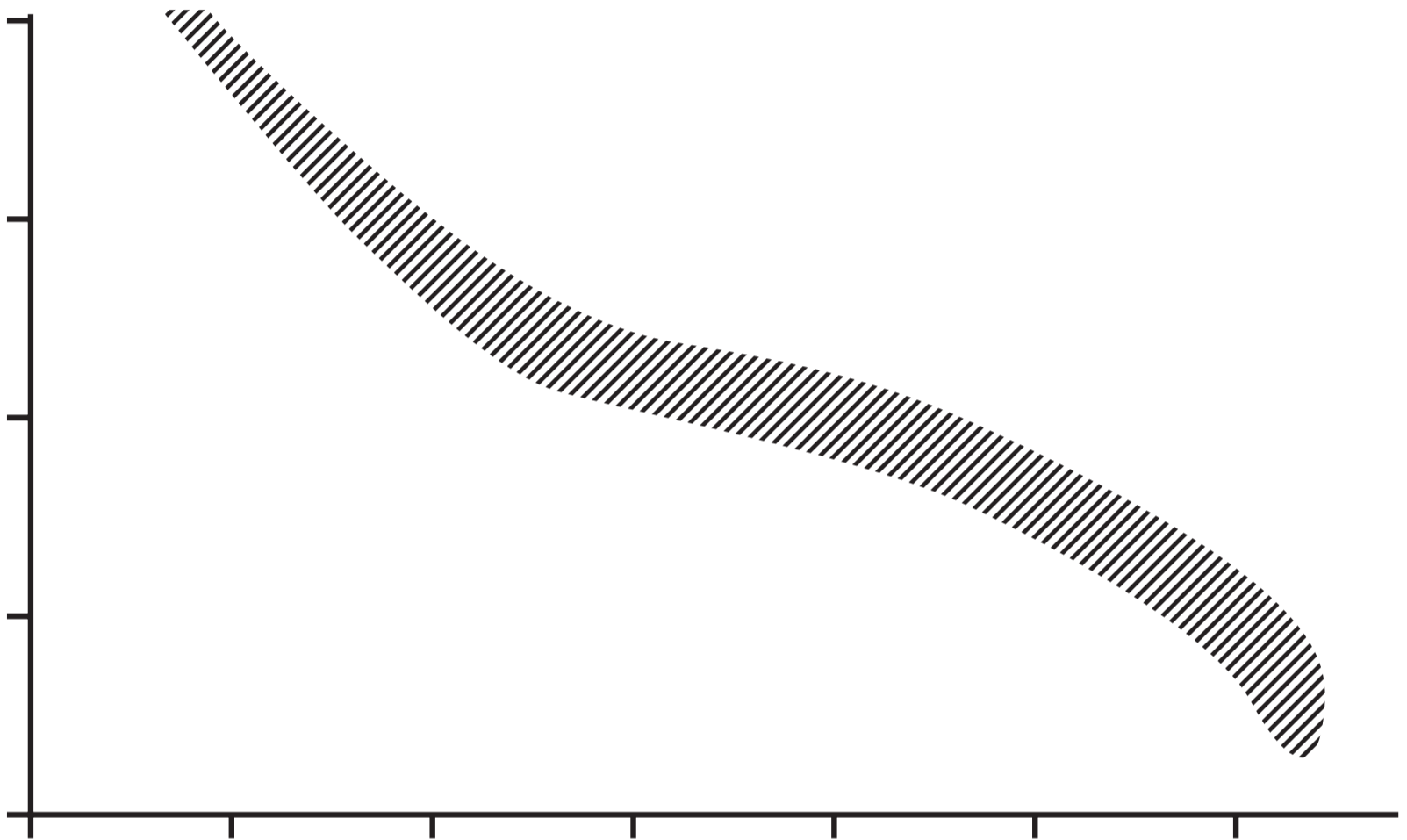
## Contents

### Page

|    |                               |
|----|-------------------------------|
| 4  | Question 1(a)                 |
| 5  | Question 1(a) (Spare copy)    |
| 6  | Question 2                    |
| 7  | Question 2(b)                 |
| 8  | Question 3                    |
| 9  | Question 4(a)(ii)             |
| 10 | Question 4(b)(i)              |
| 11 | Question 4(b)(i) (Spare copy) |
| 12 | Question 4(b)(ii)             |
| 13 | Question 5                    |
| 14 | Question 5(b)                 |
| 15 | Question 6(b)                 |
| 16 | Question 7                    |

## Question 1(a)

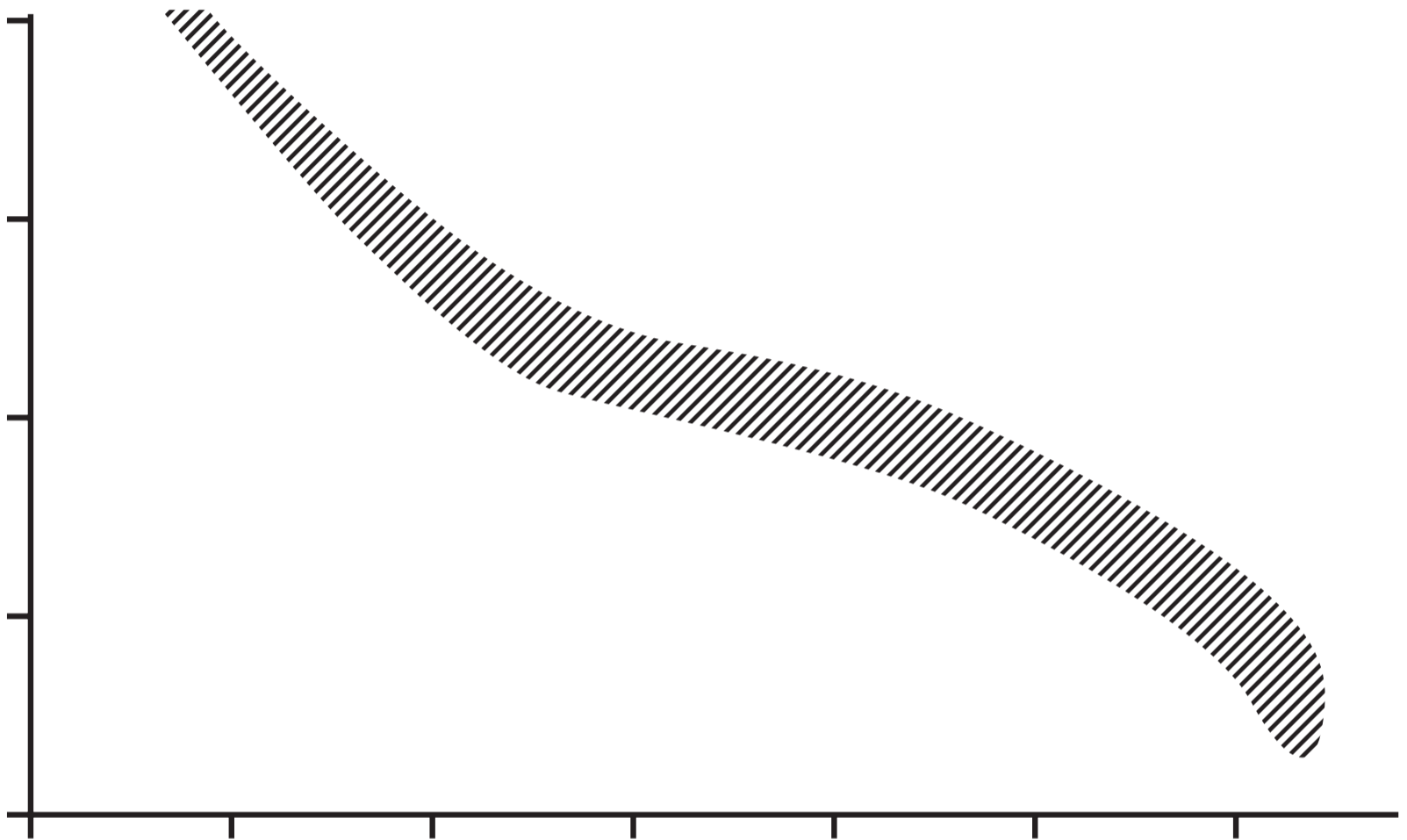
**Absolute  
magnitude**



**Temperature**

## Question 1(a) (Spare copy)

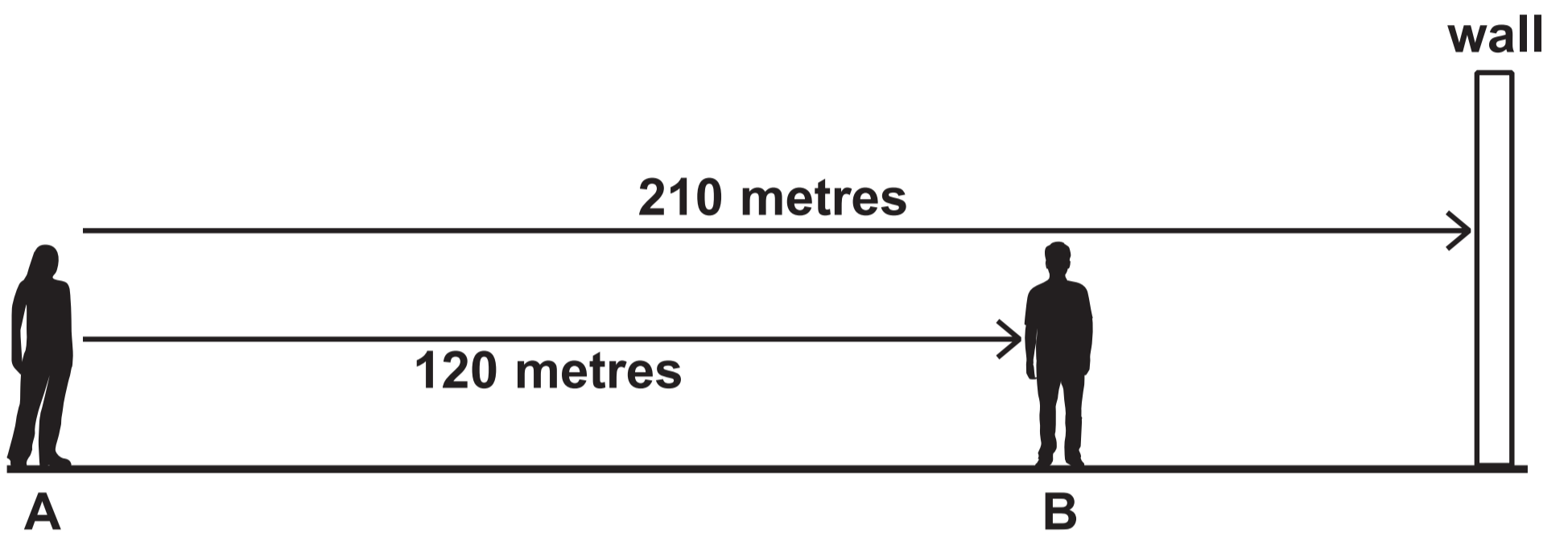
**Absolute  
magnitude**



**Temperature**

## Question 2

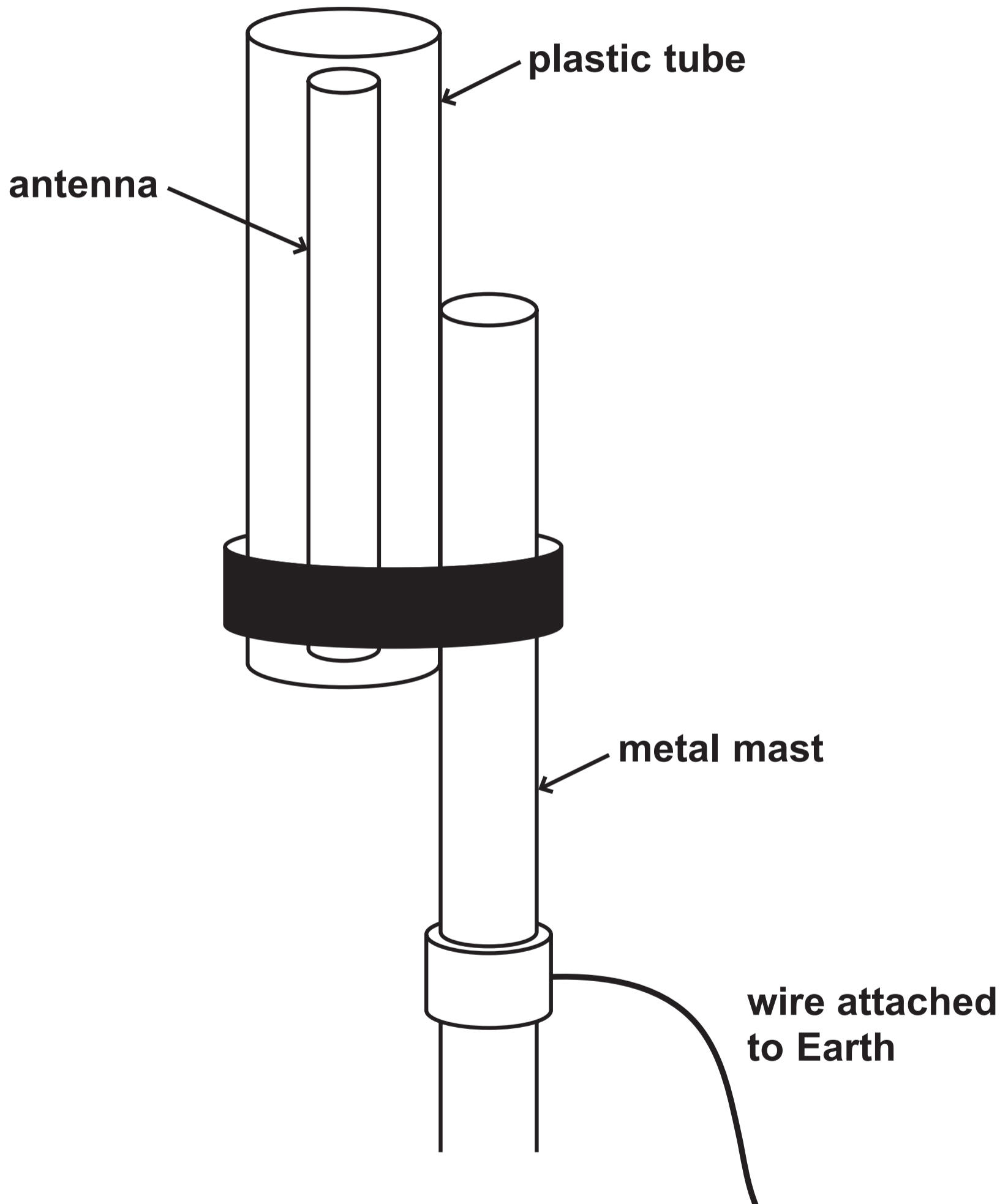
Not to scale



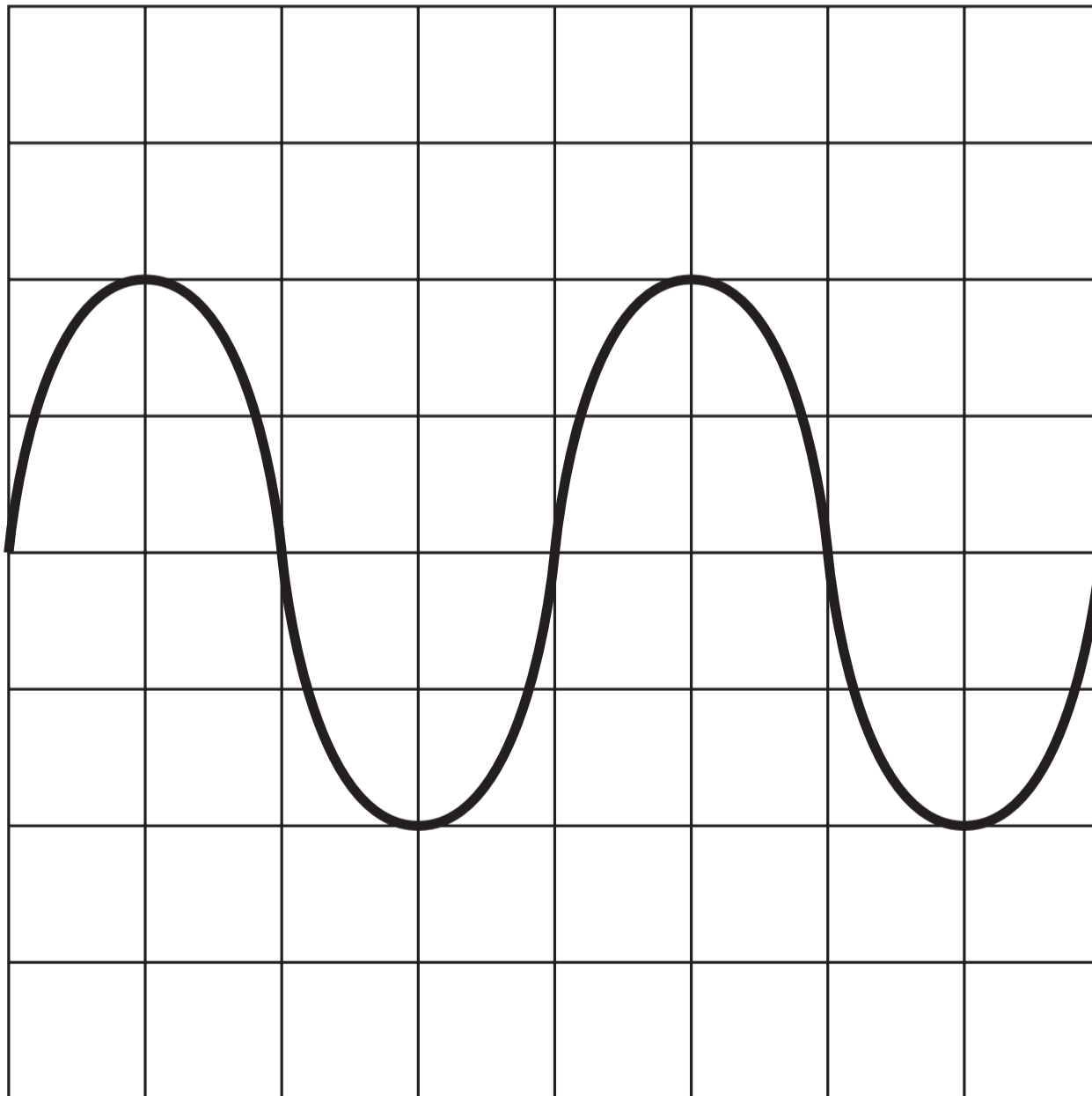
**Question 2(b)**

| <b>Time in s</b> |             |             |             |             |
|------------------|-------------|-------------|-------------|-------------|
| <b>0.50</b>      | <b>0.62</b> | <b>0.52</b> | <b>0.58</b> | <b>0.55</b> |

Question 3

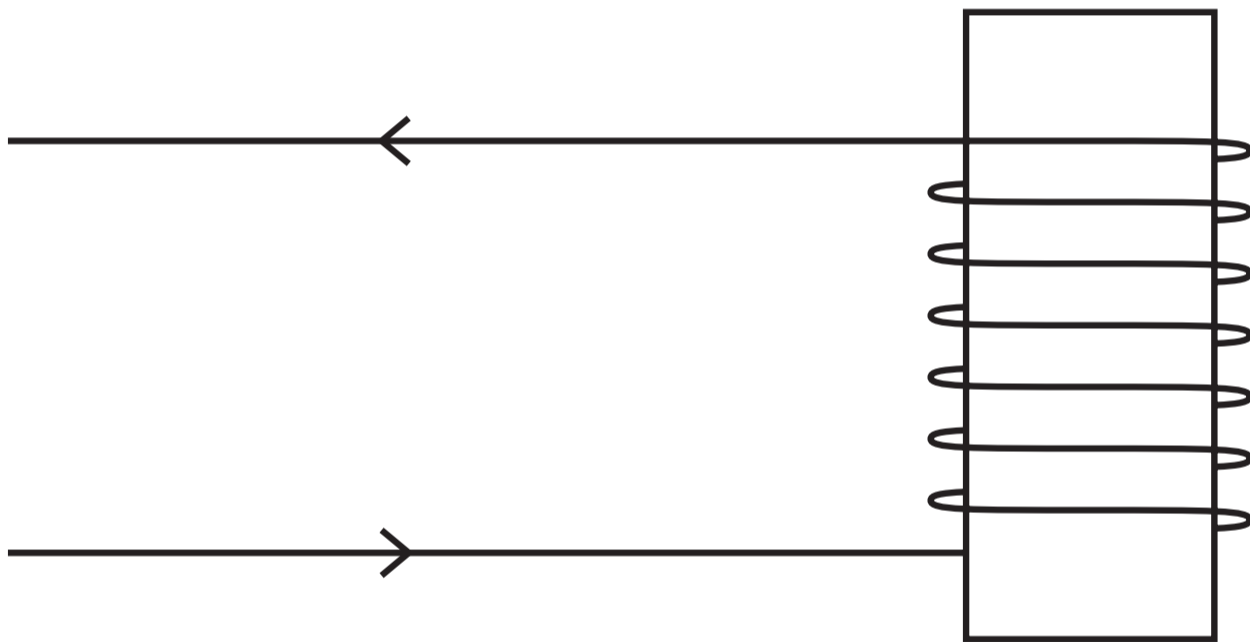




**Question 4(a)(ii)****Oscilloscope settings****y direction: 1 square = 5 V****x direction: 1 square = 0.01 ms**

## Question 4(b)(i)

DIAGRAM 1



## Question 4(b)(i) (Spare copy)

DIAGRAM 1

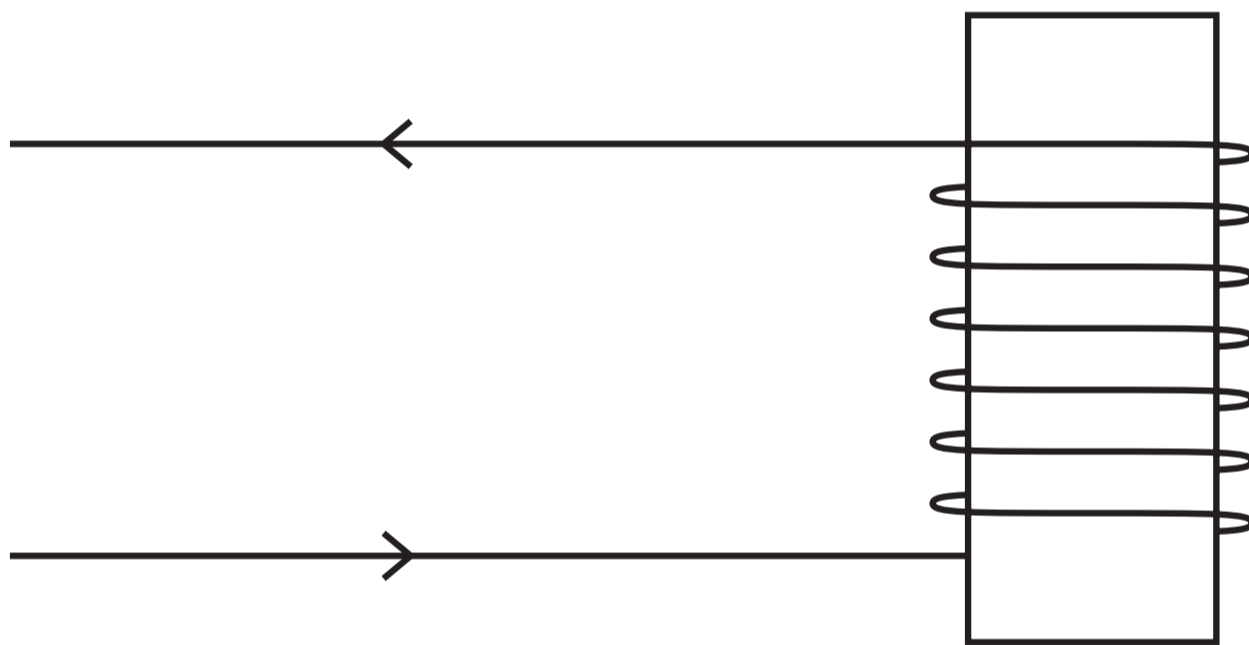
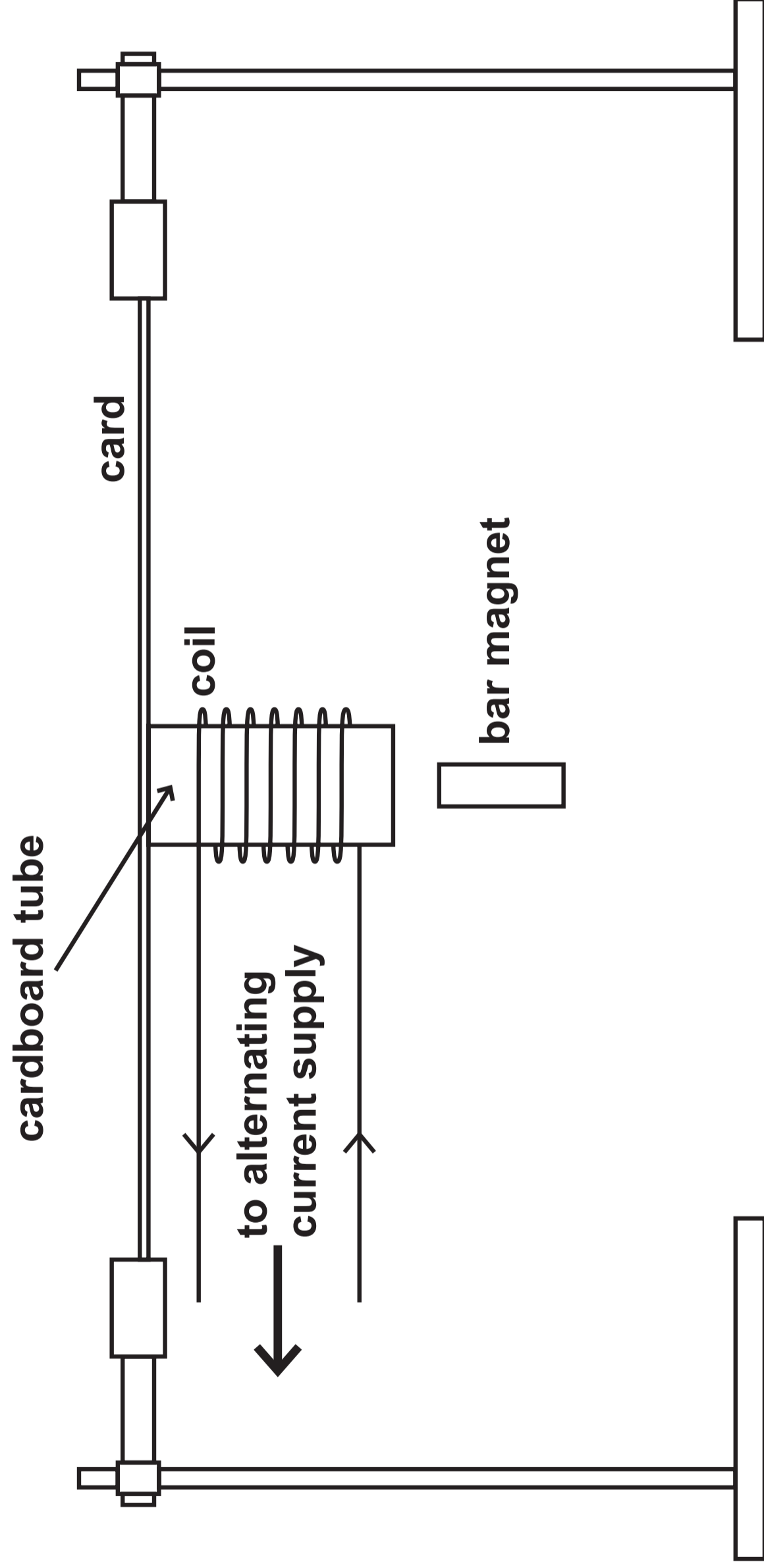
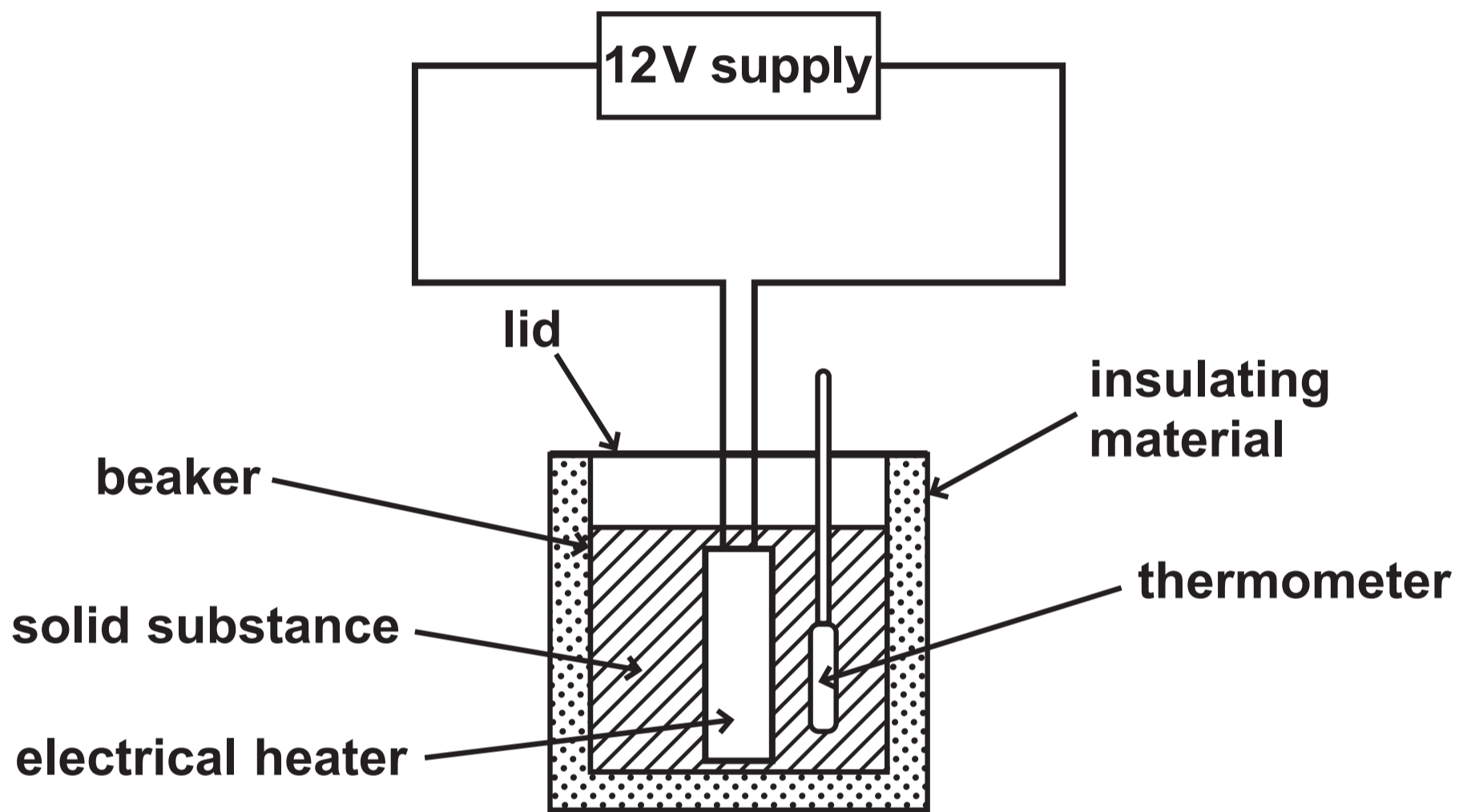


DIAGRAM 2

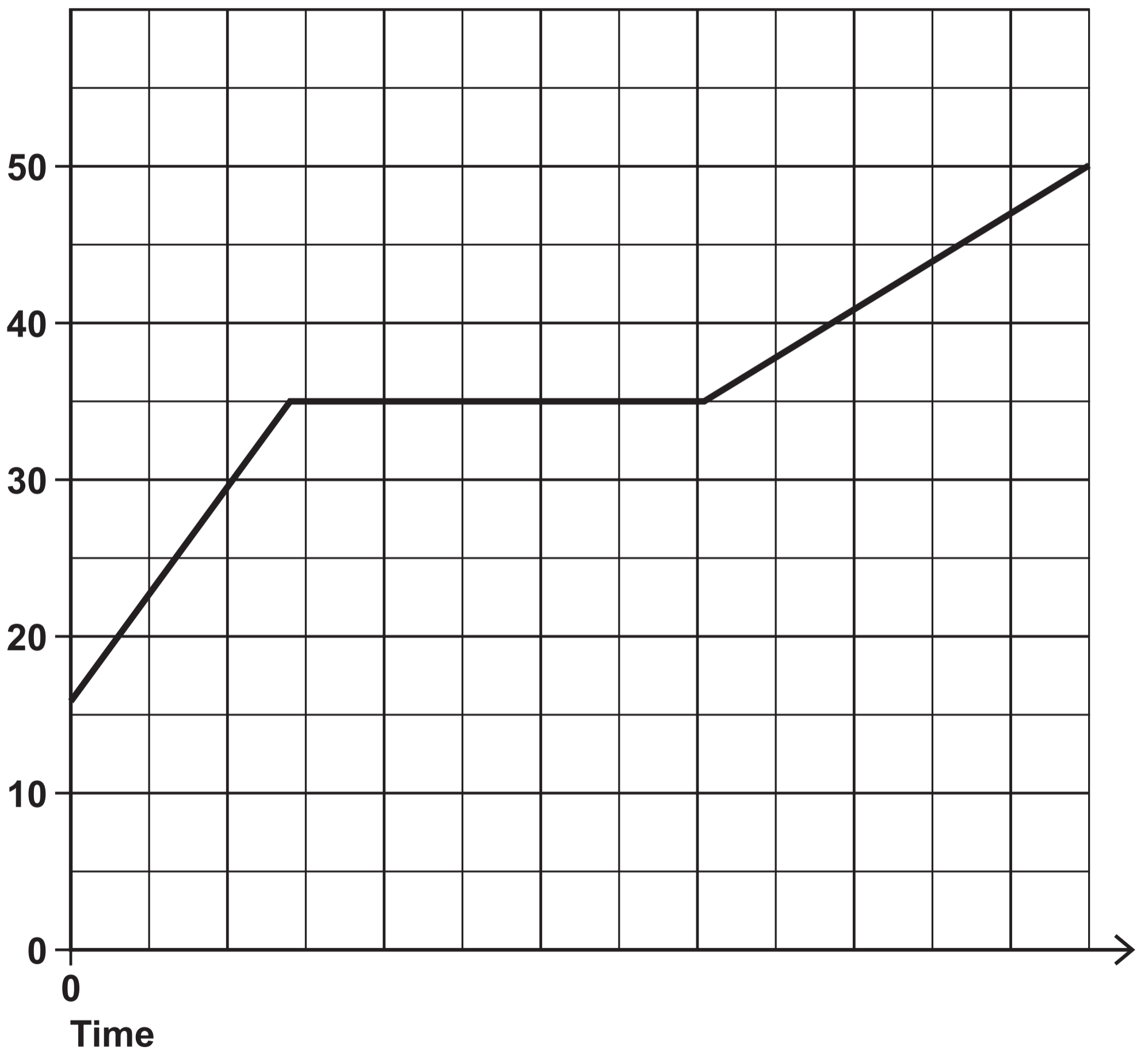


## Question 5

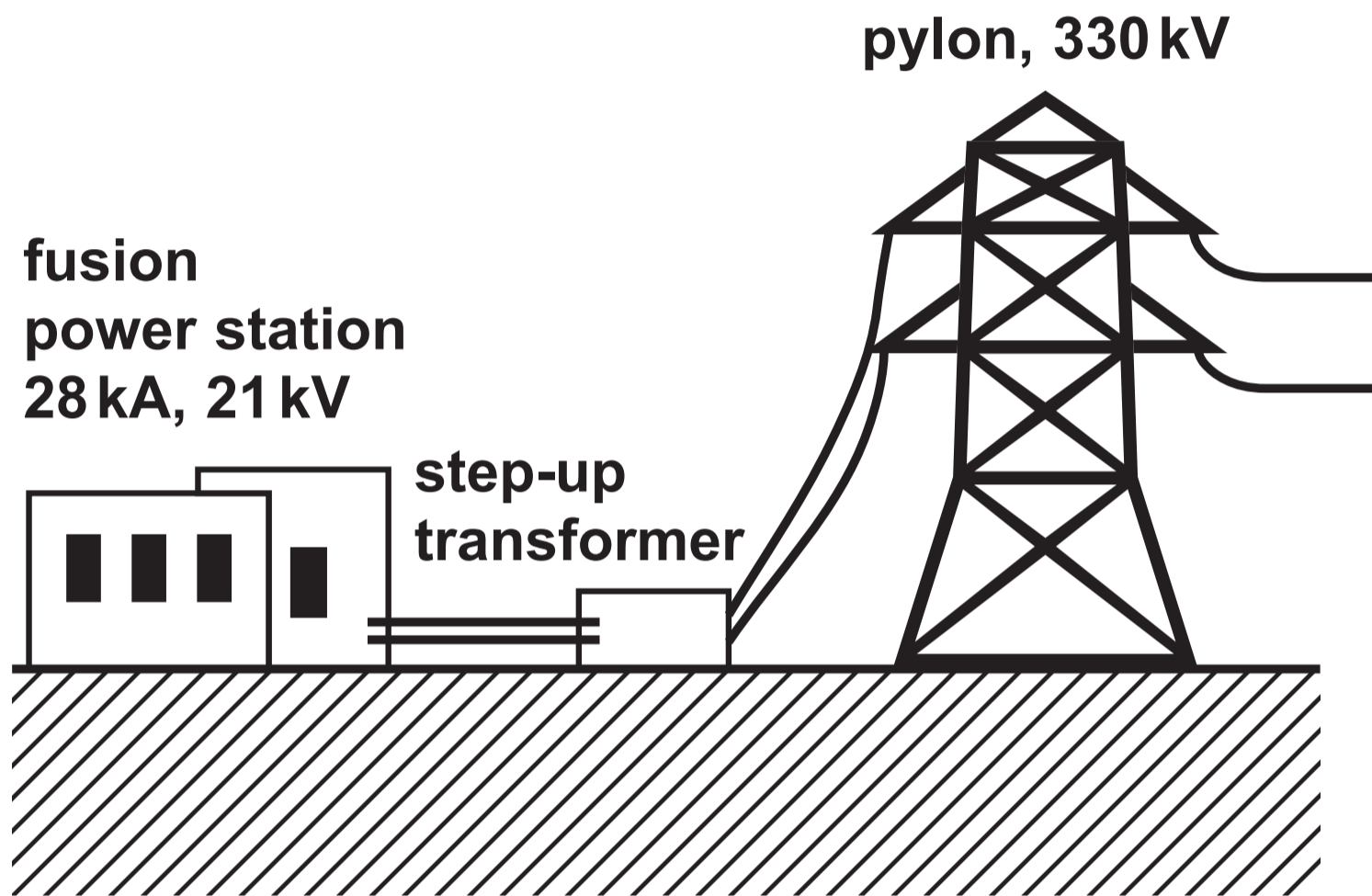


## Question 5(b)

Temperature  
in  $^{\circ}\text{C}$



Question 6(b)



Question 7

